

## Corporate Directory

**Non-Executive Chairman**  
Mr John Fitzgerald

**Managing Director**  
Mr Justin Tremain

**Executive Technical Director**  
Dr Francis Wedin

**Company Secretary & CFO**  
Mr Scott Funston

**Exploration Manager**  
Mr Elliot Grant

## Fast Facts

Issued Capital	465.5m
Market Cap	\$32.5m
Cash (31 Mar 2019)	\$12.4m

## Highlights

- Exploring for multi-million ounce gold systems in Cote d'Ivoire, West Africa
- 1,345km<sup>2</sup> of highly prospective tenure on the convergence of two proven greenstone belts
- New 'gold discoveries' at Antoinette and Veronique
- Multiple large, high tenor, coherent gold-in-soil anomalies
- First pass drilling testing of several geochemical anomalies underway
- Well-funded with ~\$12.4 million cash for ongoing drilling and exploration success

## Contact Details


ACN 009 146 794  
L2, 18 Kings Park Road  
West Perth WA 6005

PO BOX 71  
West Perth WA 6872

T: +61 8 6117 0446

E: [info@exorerresources.com.au](mailto:info@exorerresources.com.au)

W: [www.exorerresources.com.au](http://www.exorerresources.com.au)

 @ExoreResources

# Completion of Sale of Unmarketable Parcels

Exore Resources Limited ('**Exore**' or the '**Company**') advises that the sale of Exore shares under the Company's unmarketable parcel sale facility, as announced to the ASX on 29 March 2019 and 15 April 2019, has been completed at a sale price of 6.9 cents per share.

A total of 327 shareholders collectively holding 720,049 fully paid ordinary shares in Exore participated in the share sale facility.

All shareholders who participated will receive their proceeds shortly.

As a result of the successful conclusion of the share sale, the Company expects to reduce administrative costs, including printing and mailing costs and share registry expenses.

For inquiries please contact the Company Secretary, Scott Funston, on +61 8 6117 0446.

**Scott Funston**

**Company Secretary**



## Cote d'Ivoire Gold Projects

The Côte d'Ivoire Gold Projects cover a substantial ground position of 1,345km<sup>2</sup> on the convergence of two of West Africa's most prolific gold belts (refer Figure One), the Tongon Gold Belt and the Syama Gold Belt, which extend into northern Côte d'Ivoire from Burkina Faso and Mali respectively.

Significant nearby gold deposits associated with the same geology and structures include:

- 4.2Moz Tongon Gold Mine (Randgold) located ~40 kilometres to north-east
- 11.5Moz Syama Gold Mine (Resolute) located ~90 kilometres to the north
- 1.0Moz Sissingue Gold Mine (Perseus) located ~50 kilometres to the north
- Fonondara /Boundiali gold discovery (Randgold) located immediately adjacent to the west

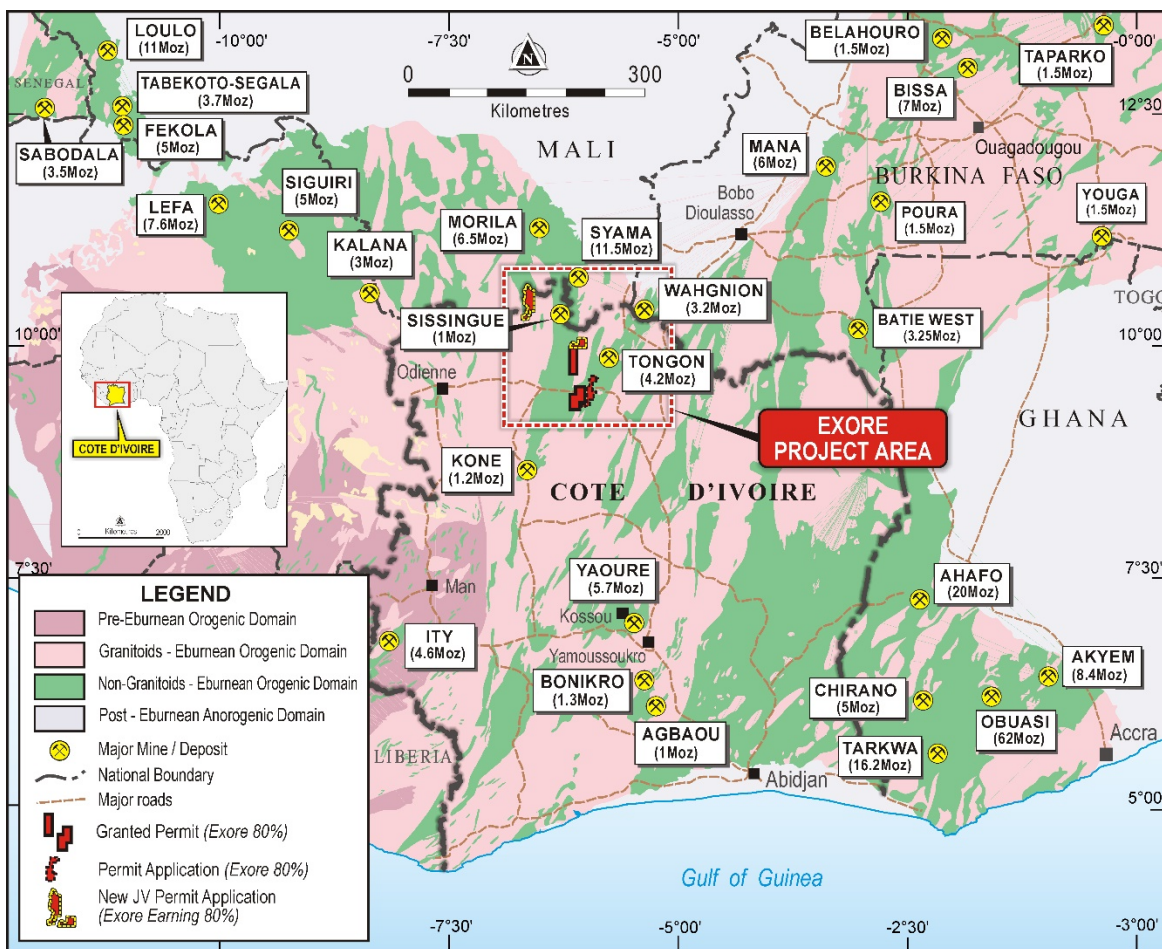


Figure One | Côte d'Ivoire

For further information on the Company's activities in Côte d'Ivoire, please visit [www.exorerresources.com.au](http://www.exorerresources.com.au).